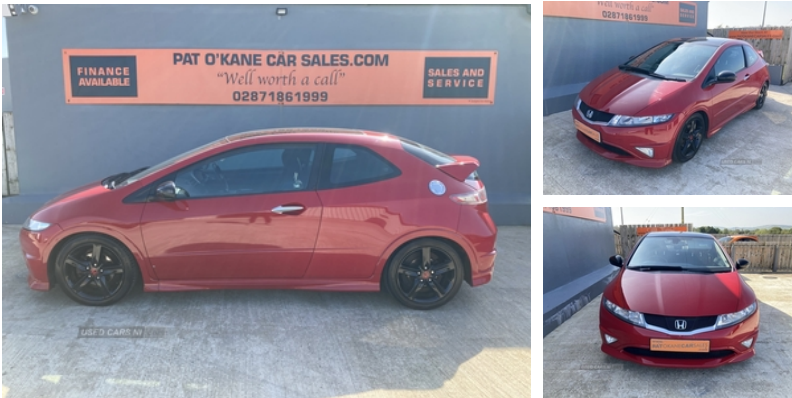


Honda Civic 1.8 i-VTEC Type S GT 3dr | 2011

£4,950



Miles:	66900
Fuel Type:	Petrol
Transmission:	Manual
Colour:	Red
Engine Size:	1799
CO2 Emission:	155
Body Style:	Hatchback
Insurance group:	21E
Reg:	EFZ8201

Three Owners from new
 2 X Keys
 Service History (10 Services)
 MOT Due 02/03/2025
 Road tax £255 per year
 Finance available 18+Subject to status - trade-ins welcome
 subject to inspection
 # Please call before traveling to check availability & avoid
 disappointment #

Vehicle Features

5 three point seatbelts, 6 speakers, 60/40 split/folding 2nd row of seats, ABS+EBD+Brake assist, Active front headrests, Adaptable boot storage, Adjustable dashboard illumination, Alcantara upholstery, Aluminium foot rest, Audible lights on warning, Automatic headlights with dusk sensor, Automatic rain sensing wipers, Body colour deep side skirt, Body coloured bumpers, Body coloured side sills, Body colour electric adjustable heated door mirrors, Boot light, CAT 1 interior + perimeter alarm, Centre armrest console, Centre dashboard pocket, Cruise control, Deadlocks, Drilled aluminium sports pedals, Driver's seat height adjustment, Driver and passenger seat memory, Dual climate control air conditioning system, Dual front SRS airbags, Dual side SRS airbags, ECU immobiliser, Electric front windows, Engine start/stop button, Front and rear bottle holders, Front and rear dual curtain SRS airbags, Front and rear power sockets, Front ashtray, Front cupholders, Front fog lights, Front interior welcome light, Front map lights, Front seatbelt pretensioners, Fuel filler release, Illuminated air conditioned glovebox, Illuminated Driver/Pass vanity mirrors with cover, Instant mobility system, Internally adjust headlights, Isofix child seat restraint mechanism, Locking glovebox, Locking wheel nuts, MP3 compatible radio/single CD player, Multi function computer, Outside temperature gauge, Panoramic opening glass sunroof, Parcel shelf, PAS, Passenger seat back pocket, Pollen filter,

Technical Specs

DIMENSIONS	
Length:	4270mm
Width:	1785mm
Height:	1460mm
Seats:	5
Luggage Capacity (Seats Up):	485L
Gross Weight:	1750KG
Max. Loading Weight:	433KG
PERFORMANCE & ECONOMY	
Fuel Consum. (Urban Cold):	32.1MPG
Fuel Consum. (Extra Urban):	51.4MPG
Fuel Consum. (Combined):	42.2MPG
Fuel Tank Capacity:	50L
Number Of Gears:	6 SPEED
Top Speed:	127MPH
Acceleration 0-100 km/h:	8.9s
Engine Power BHP:	138.1BHP

Power foldback door mirrors, Rear boot spoiler, Remote keyless entry, Silver front door handles, Three height adjustable rear head restraints, Tilt/telescopic adjust steering wheel, Twin chromed exhaust pipes, Type-R style matt black radiator grille, Tyre pressure warning, USB connection, Vehicle stability assist